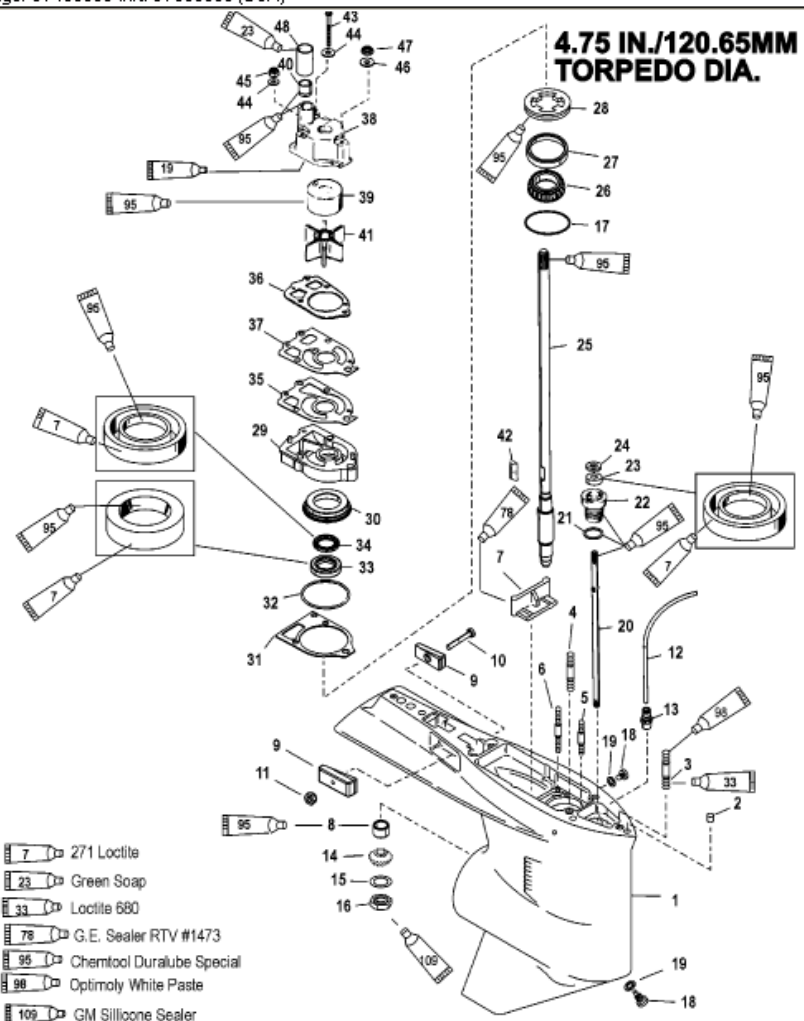


Parts List						
Ref	Class	Part	Description	Qty	Comment	Footnote
0	1647	9148T86	GEAR HOUSING-COMPLETE	1	[X-LONG](1.87:1)	
0	1647	9148T83	GEAR HOUSING-COMPLETE	1	[X-LONG](2:1)	
1	1647	9148T93	GEAR HOUSING	1	(BASIC)	
2	17	43044	DOWEL PIN	2		
3	16	18978	3	1		
4	16	57920	3	2		
5	16	56297	2	1		
6	16	30667	STUD (3-1/8 IN.)	2		
7		67891	FILLER BLOCK	1		
8	31	42647A	ROLLER BEARING	1		23
9		826134Q	ANODE	2		
10	10	40003	33	1		
11	11	40138	6	1		
12	32	859449	75	1		
13	22	859432	FITTING	1		
14		NSS	PINION GEAR	1	(1.87:1 - 15 TEETH)[Part of 43-82]	22
14	43	44101T	3	1	[2:1 - 14 TEETH]	
15	12	92721	WASHER	1		22,23
16	11	35921	NUT	1		22,23
17	15	42637A	1	AR		22,23
18	10	79953Q	2	2		
19	12	19183	2	2		15,18,23
20		78902	2	1		
21	25	25439	O-RING	1		2,15,23
22	23	77631A	2	1		15,23
23	26	816464	1	1		15,23
24	12	77674	WASHER-RUBBER	1		
25	45	44209	1	1		
26	31	36387A	1	1		23
27		NSS	CUP	1		23
28		824519	1	1		
29	46	42579A	3	1		
30		NSS	RETAINER	1		
31	27	42631	1	1		2,15,18,23
32	25	90011	O-RING	1		2,15,18,23
33	26	89238	OIL SEAL	1		15,23
34	26	16977	OIL SEAL	1		15,23
35	27	85608	1	1		2,15,18,23
36	27	858524	1	1		2,15,18,23
37		32435	FACE PLATE	1		18
38	46	96148T	1	1		18

**4.75 IN./120.65MM
TORPEDO DIA.**



- 7 271 Loctite
- 23 Green Soap
- 33 Loctite 680
- 78 G.E. Sealer RTV #1473
- 95 Chemtool Duralube Special
- 96 Optimoly White Paste
- 109 GM Silicone Sealer
- 19 Perfect Seal Sealing Compound Number 4